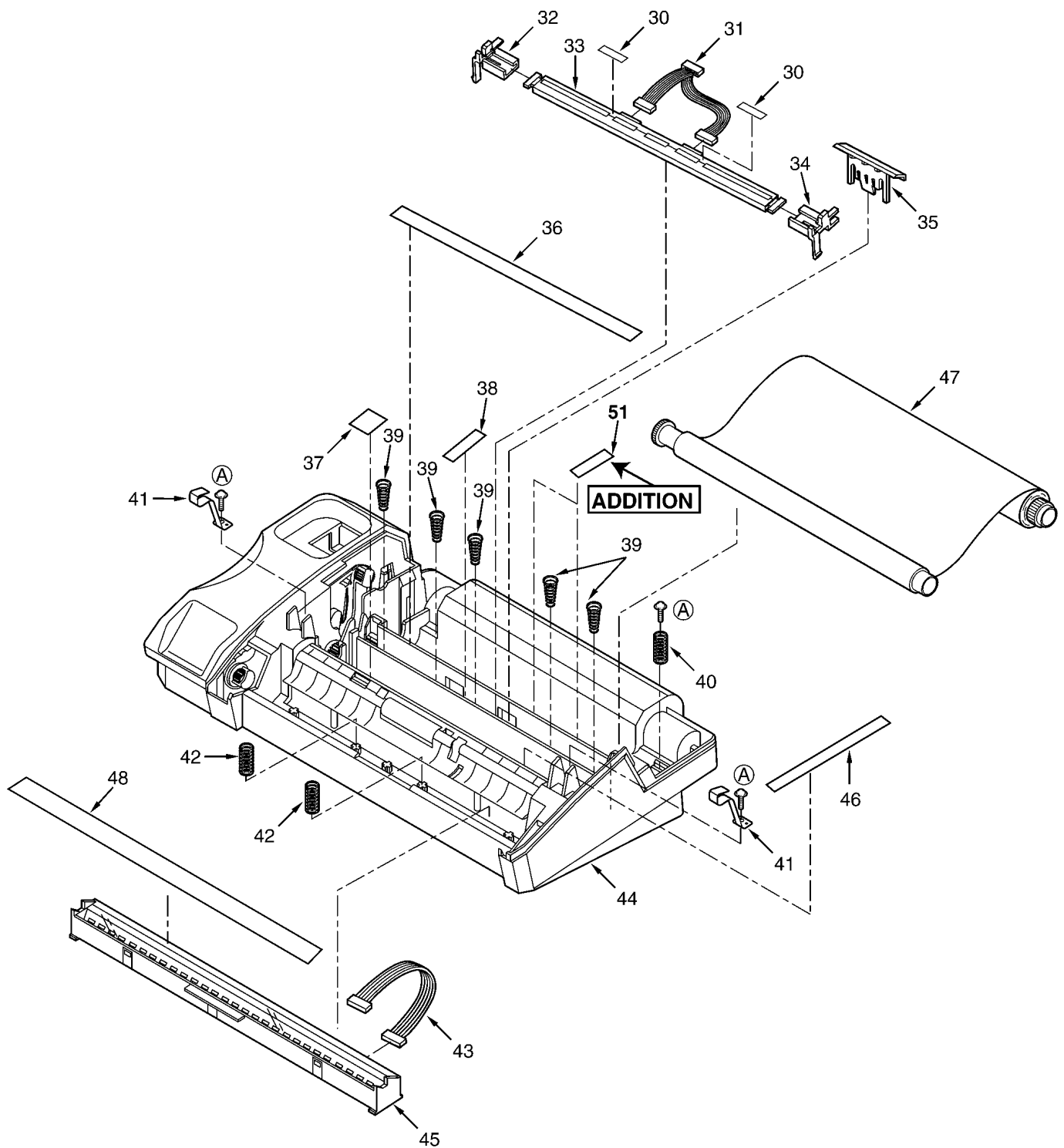


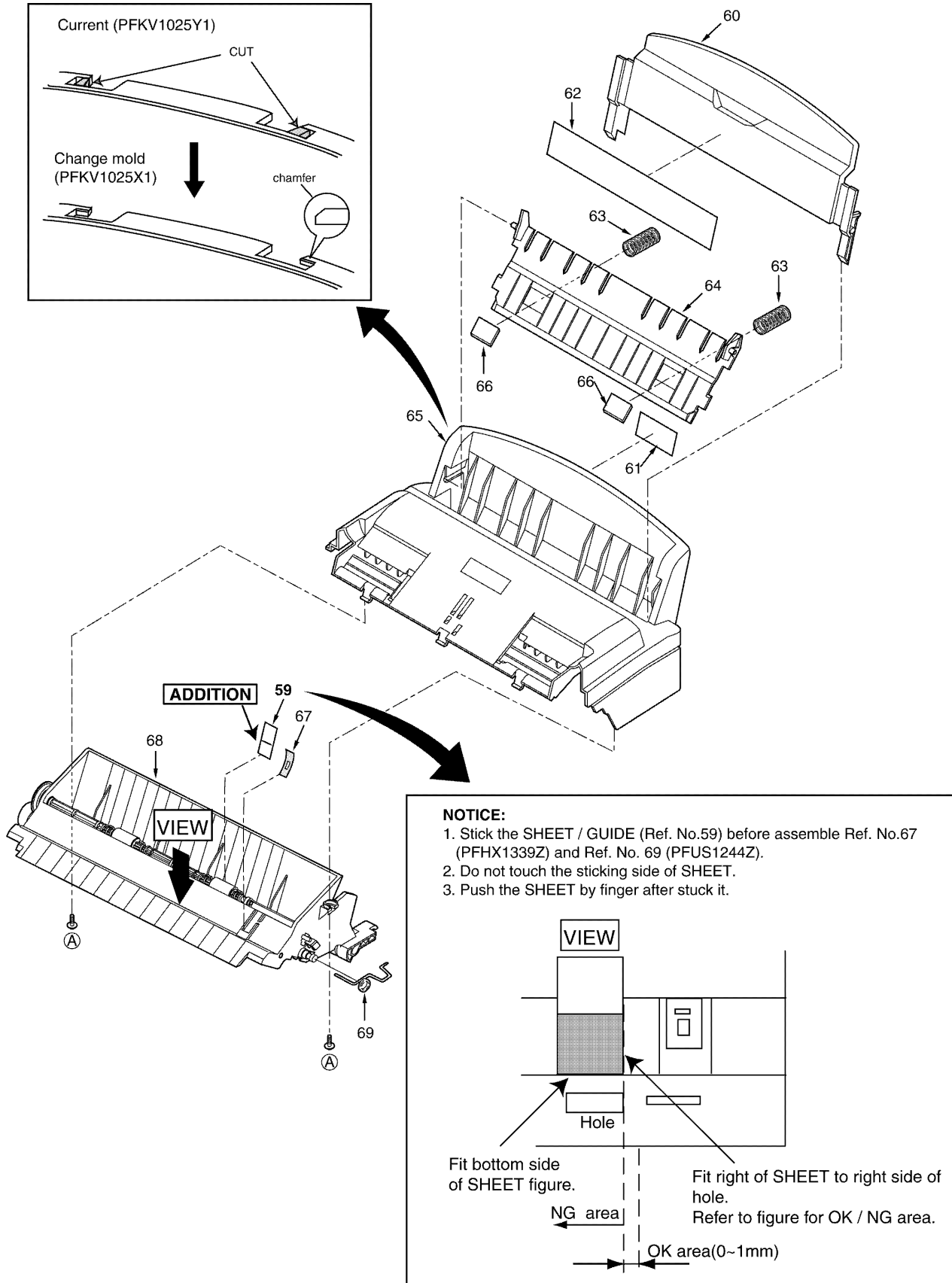
## 4 CABINET, MECHANICAL AND ELECTRICAL PARTS LOCATION

### 4.1. UPPER CABINET SECTION

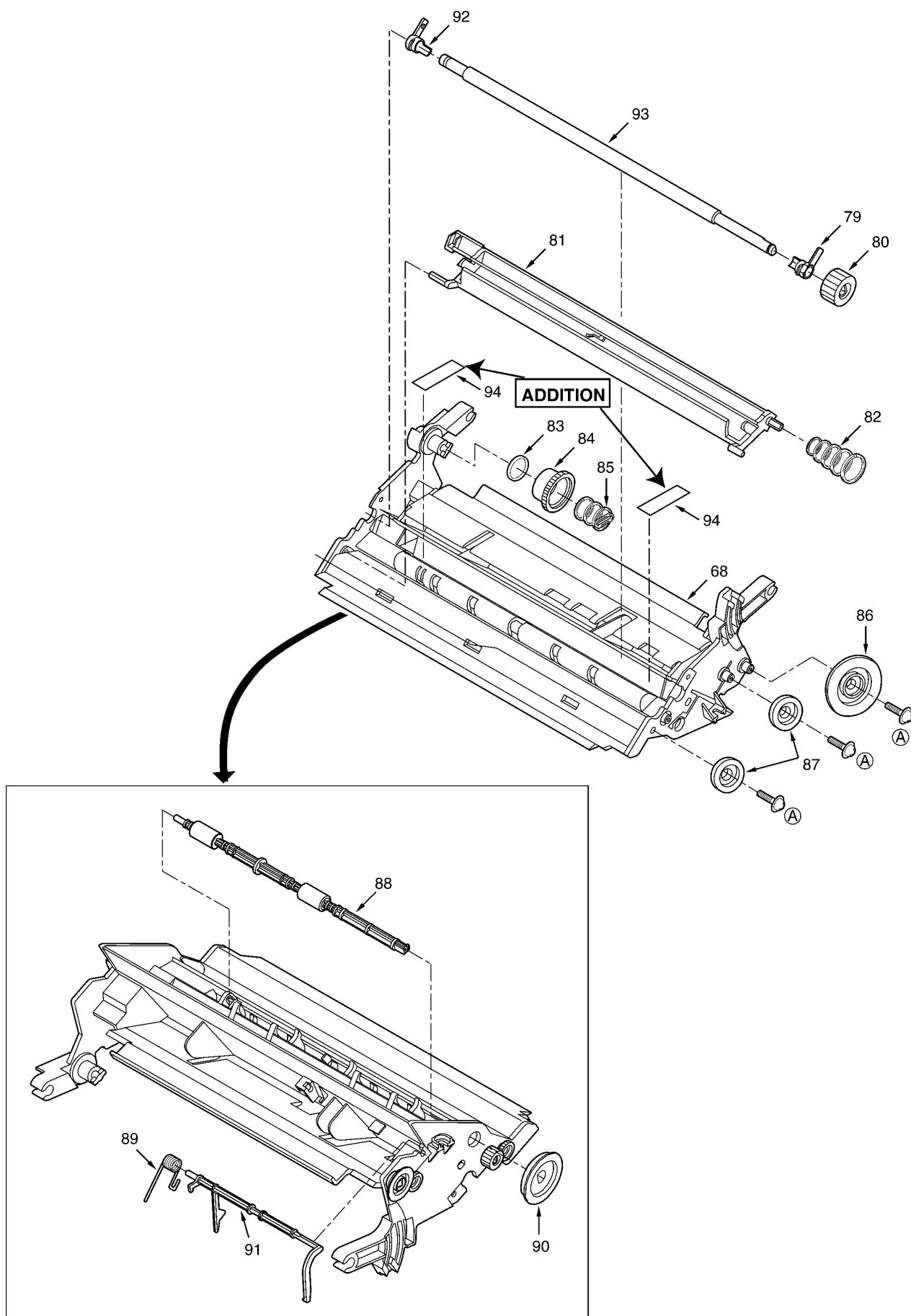


## 4.2. BACK COVER SECTION

### 4.2.1. BACK COVER 1



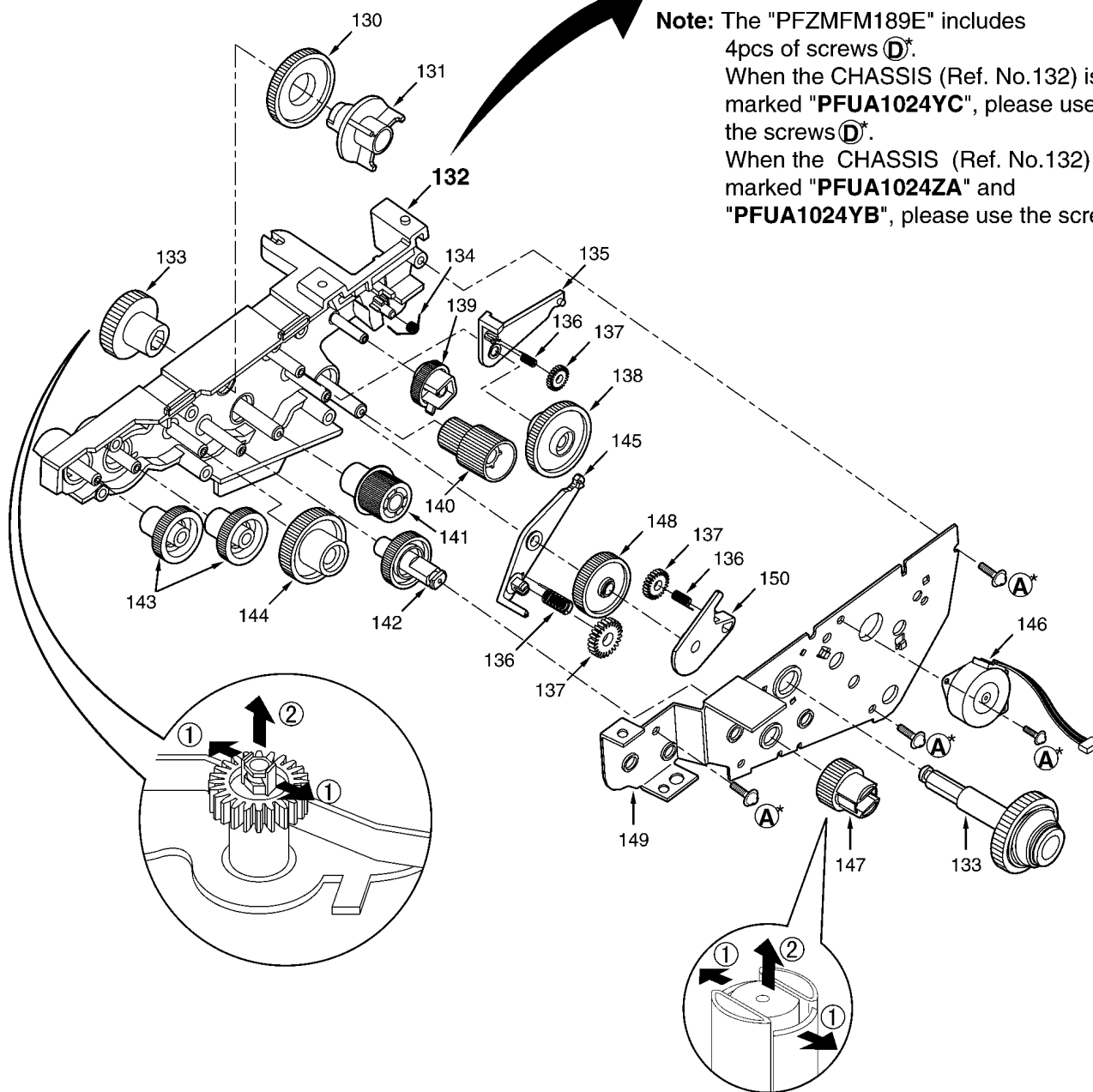
#### 4.2.2. BACK COVER 2

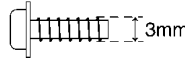
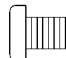



### 4.3. MOTOR SECTION

**New Parts No. : PFZMFM189E (CHASSIS KIT)**

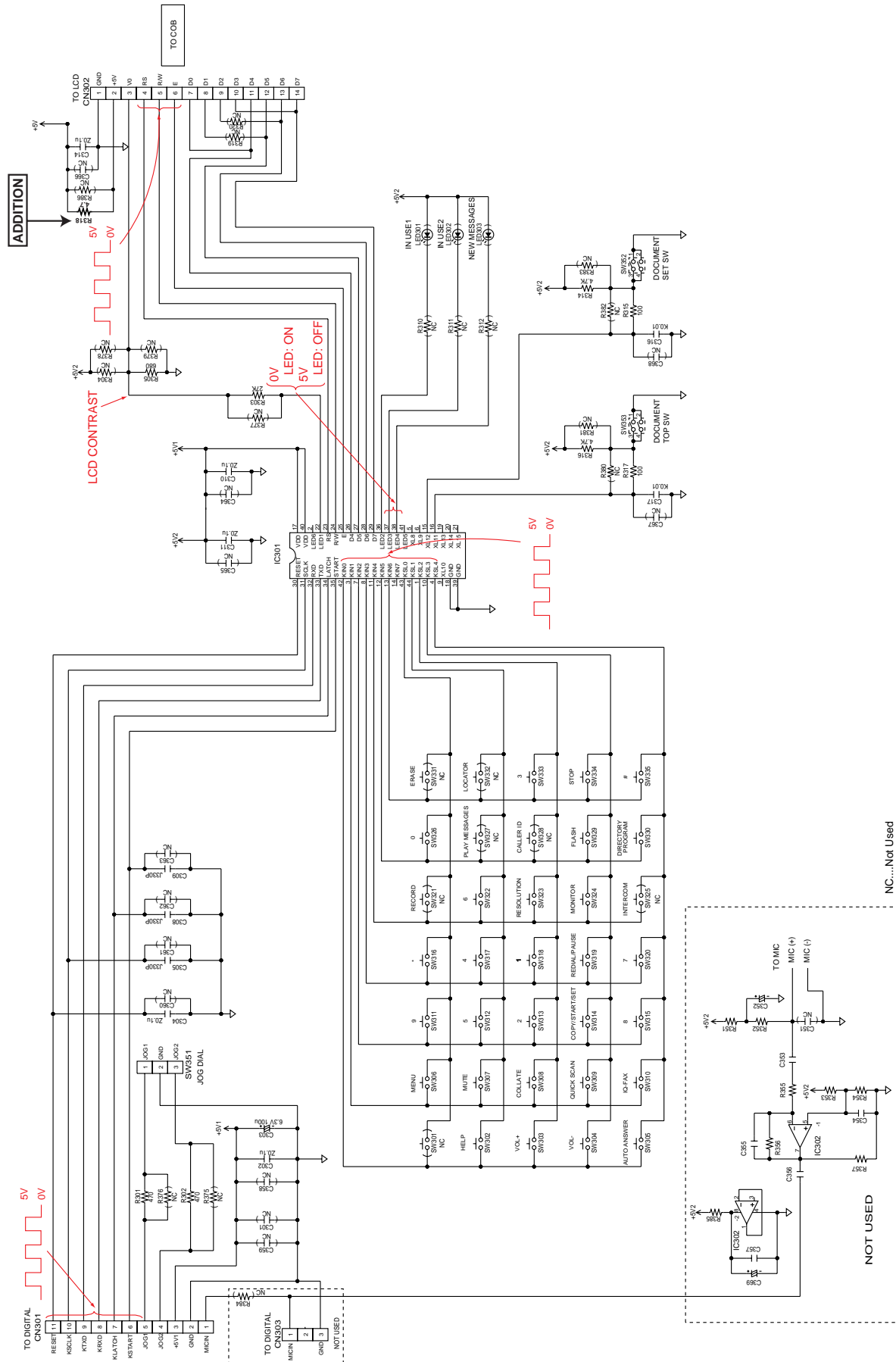
**Note:** The "PFZMFM189E" includes  
4pcs of screws ①.  
When the CHASSIS (Ref. No.132) is  
marked "PFUA1024YC", please use  
the screws ①.  
When the CHASSIS (Ref. No.132) is  
marked "PFUA1024ZA" and  
"PFUA1024YB", please use the screws ②



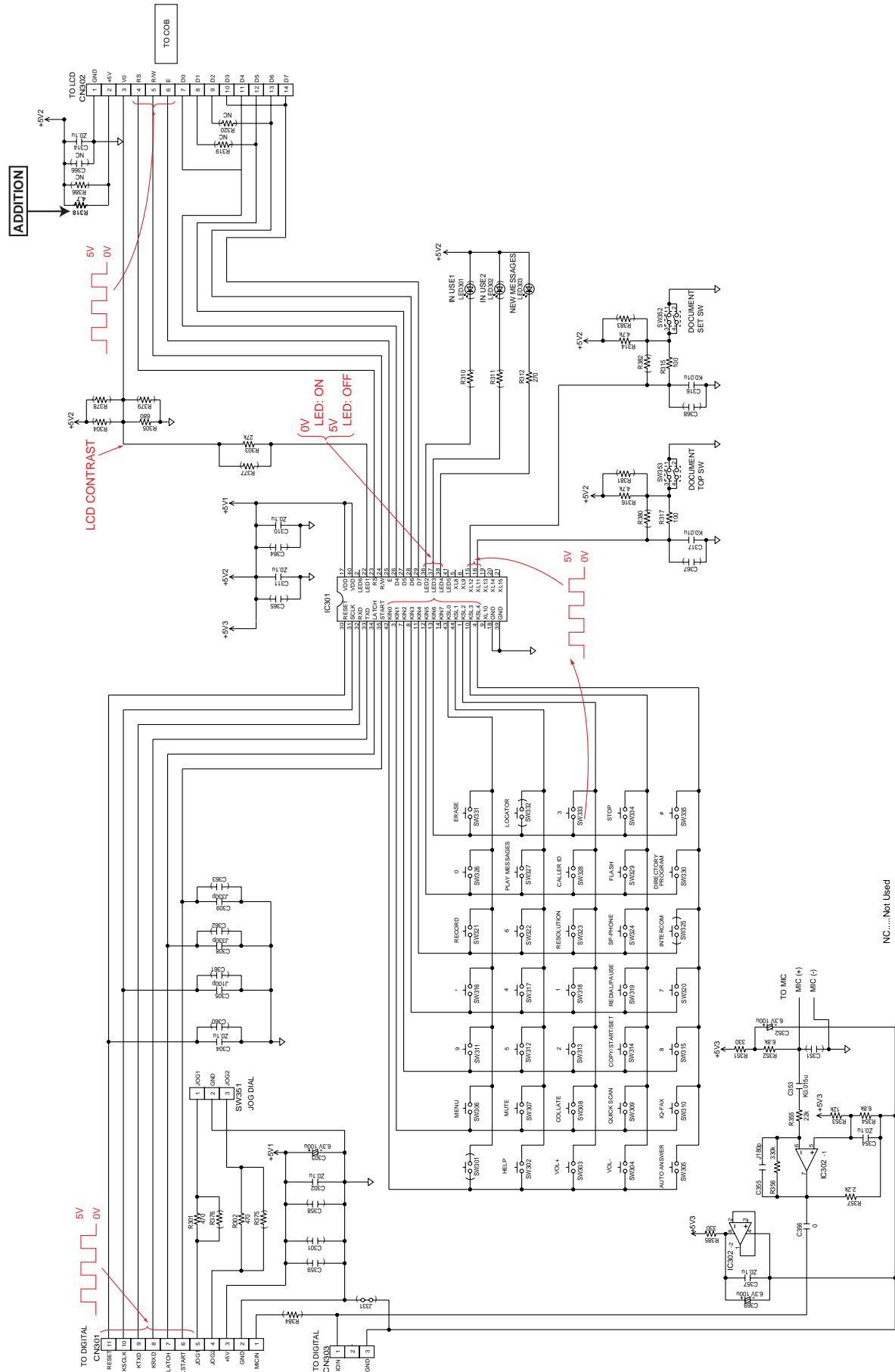
	Part No.	Illustration
①	XTW3+S10P	
②	XSB4+6	
③	XTW3+U14L	
④	XTW26+S10P	

# 5 SCHEMATIC DIAGRAM

## 5.1. OPERATION BOARD (for KX-FP81LA)



## 5.2. OPERATION BOARD (for KX-FP88AG)



TN  
KXFP81LA , KXFP81LS  
KXFP82AG, KXFP82BR  
KXFP85LA, KXFP88AG